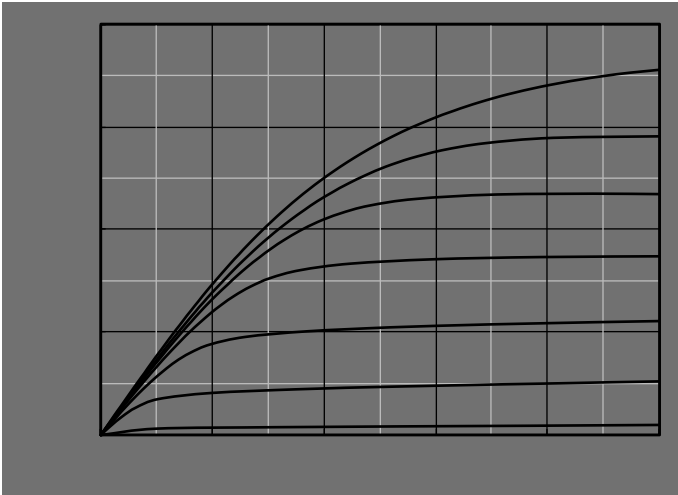


YJD80G10A



Typical Electrical and Thermal Characteristics Diagrams





YJD80G10A

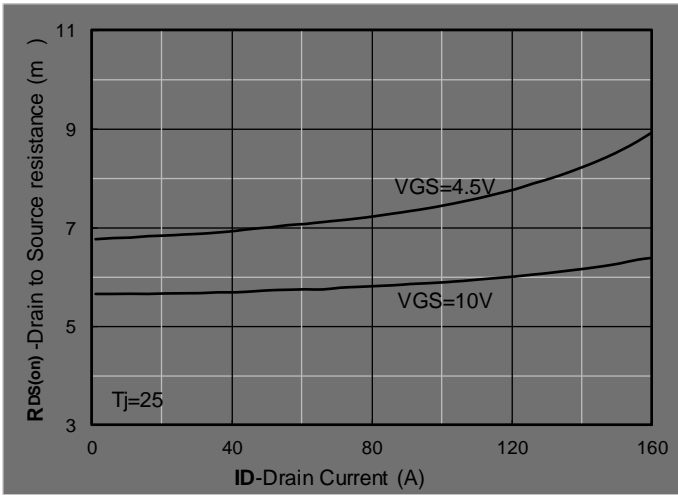


Figure 7. RDS(on) VS Drain Current

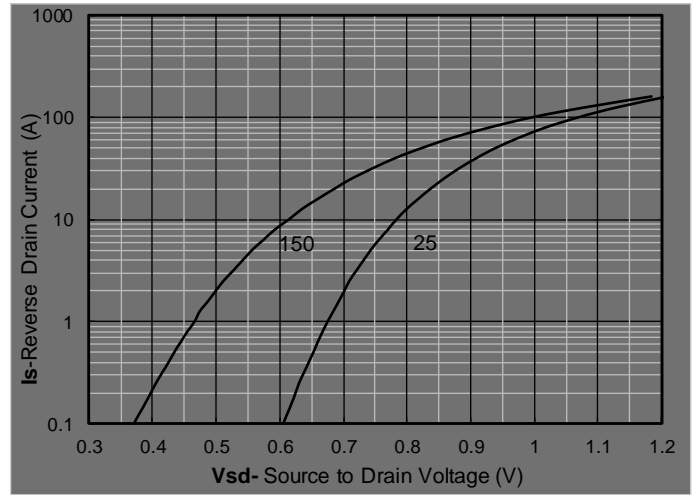
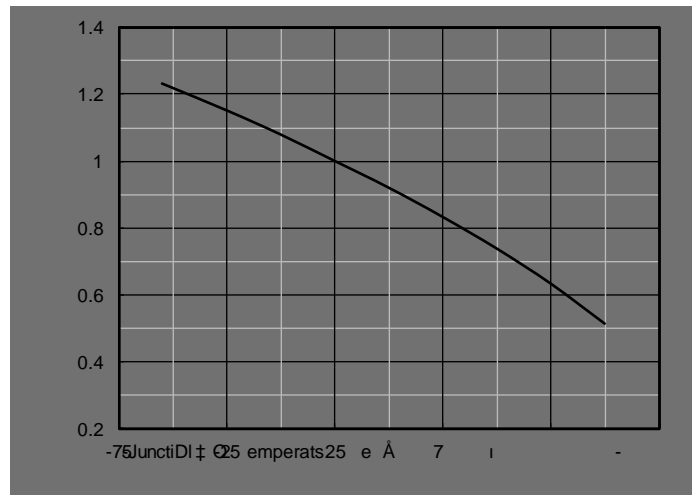
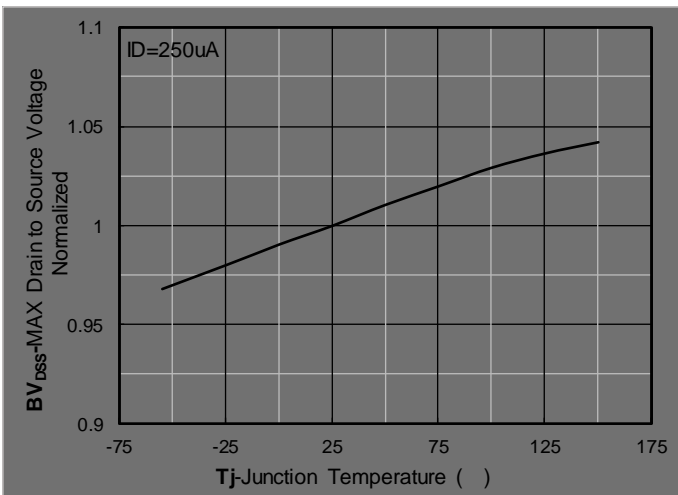
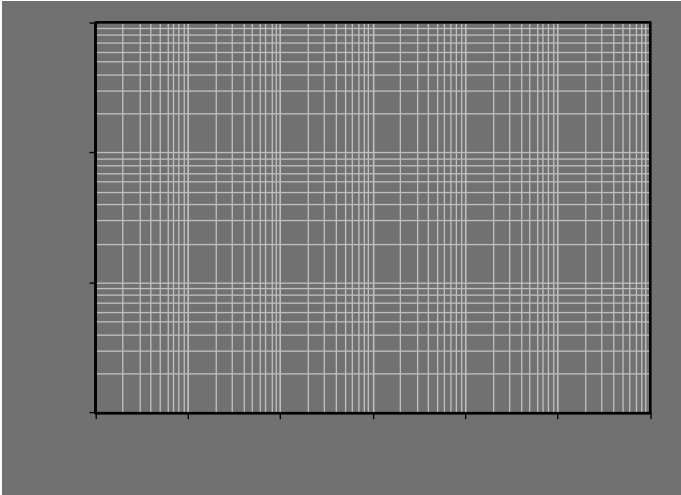
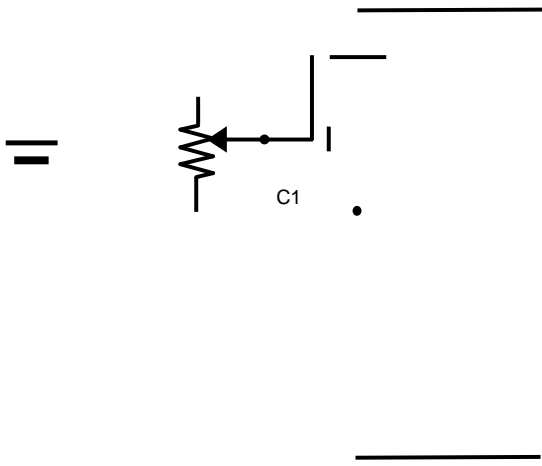


Figure 8. Forward characteristics of reverse diode



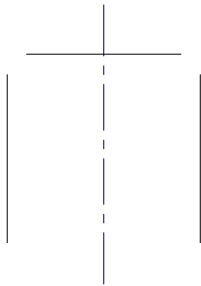




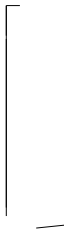


YJD80G10A

TO-252-B Package information



TOP VIEW



SIDE VIEW

SYMBOL	DIMENSIONS			
	INCHES			
	MIN.	NOM.		
A1	0.000			
A2	0.087	0.091		
A3	0.035	0.039		
b	0.026	0.030		
c	0.018	0.020		
D	0.256	0.260		
D1				
D2	0.181	0.189		
E	0.390	0.398		
E1	0.236	0.240		

BOTTOM VIEW

SUGGESTED SOLDER PAD LAYOUT

NOTE:
1. PACKAGE BODY SIZES EXCLUDE MOLD FLASH AND GATE BURRS.
2. TOLERANCE 0.1mm UNLESS OTHERWISE SPECIFIED.
3. THE PAD LAYOUT IS FOR REFERENCE PURPOSES ONLY.



YJD80G10A

Disclaimer

The information presented in this document is for reference only. Yangzhou Yangjie Electronic Technology Co., Ltd. reserves the right to make changes without notice for the specification of the products displayed herein to improve reliability, function or design or otherwise.

The product listed herein is designed to be used with ordinary electronic equipment or devices, and not designed to be used with equipment or devices which require high level of reliability and the malfunction of which would directly endanger human life (such as medical instruments, transportation equipment, aerospace machinery, nuclear-reactor controllers,